

DATALOGIC - S300 SAFETY PHOTOCELL

S300-PR-5-G00-EX-SG-ST2

951451320 Through Beam Emitter Safet Sensor Type 2

- Separate safety beams, infrared
- Range 0-50 m
- Operating temperature -40 °C...+55 °C



PRODUCT DESCRIPTION

Datalogic safety photocell S300 series (transmitter-receiver couple) have been homologated to function with the control units of the SG-BWS series that together form a safety system respectively of Type 2 (PL d, SIL 2) and Type 4 (PL e, SIL 3) conforming with the EN 954-1, EN ISO 13849-1 and EN 62061 standards.

S300 safety photo cell has operating range of 0-50 (Type 2) and 0-40 m (Type 4). All models have a M12 4-pole connectors for transmitter and receiver.

S300 safety photo cells are suitable for outdoor use with temperature range from -40 °C to +50 °C and IP67 housing.

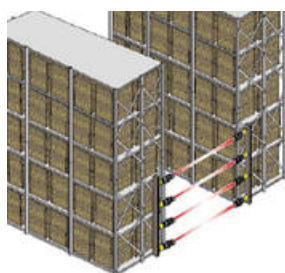
Defogging models with heated front glass are available for applications where sudden changes of the temperature in the nearby of the sensor are causing condensation

LEDs signal both the operating status and correct alignment of the safety photocells

Application

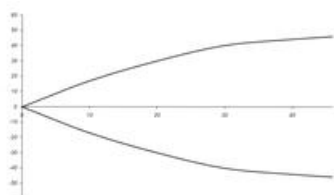
Body protection

Door control

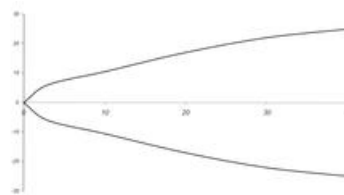


TECHNICAL DATA


Detection diagrams



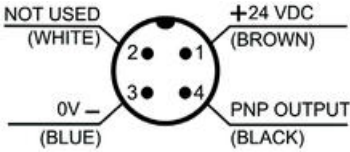
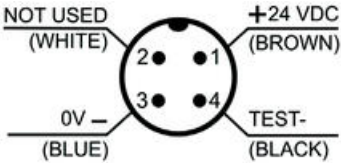
S300-F/G- SG-ST2



S300-F/G- SG-ST4

| | |
|---------------------------|---|
| Technical Data | |
| Supply voltage | 24 V DC, stabilised |
| Tolerance | ± 15 % |
| Consumption | S300...F (receiver): < 25 mA S300...G (transmitter): < 20 mA |
| Outputs | PNP, NC open collector |
| Output current | 100 mA (resistive load) |
| Output saturation voltage | 2.4 V max |
| Response time | 1 ms |
| Diagnostic functions | Test input |
| Switching frequency | 500 Hz |
| Type of light | IR LED 880 nm |
| EAA | S300 (Type 2): ± 5° / S300 (Type 4): ± 2,5° |
| Operating distance | 0-50 m (Type 2) 0-40 m (Type 4) |
| Status indication | Tx: 1 led, Power ON (Green) Rx: 2 led's, Output Led (yellow) + Stability Led (green) |
| Cable connection | Transmitter M12, 4-pole |
| | Receiver M12, 4-pole |
| Material housing | PBT 30% Glass fiber-reinforced, Lenses and frontal window PC |
| Weight | 140 g |
| Protection class | IP67 |
| Operating temperature | -40 °C to +55 °C |
| Storage temperature | -40 °C to +70 °C |
| Approvals |  |

CONNECTION

| | | | |
|---|---------|--|-------------------------------------|
| Connection of S300 safety photocell | | | |
| Receiver (Rx, F) | | Transmitter (Tx, G) | |
|  | |  | |
| Receiver (Rx, F), 4-pole, M12-connector | | Transmitter (Tx, G), 4-pole, M12-connector | |
| 1 | = brown | = +24 V DC (power supply) | 1 = brown = +24 V DC (power supply) |
| 2 | = white | = not used | 2 = white = not used |
| 3 | = blue | = 0 V (power supply) | 3 = blue = 0 V (power supply) |

4 = black = PNP output 4 = black = Test input

NOTE !

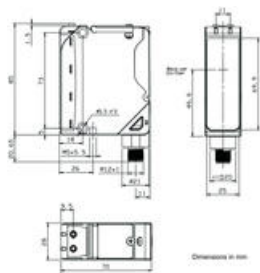
THE SAFETY PHOTOCELLS ARE CERTIFIED AND MUST BE USED ONLY WITH SAFETY CONTROL UNITS SG-BWS-T4 AND SG-BWS-T4-MT SERIES. NEITHER TECHNICAL AND FUNCTIONING COMPATIBILITY NOR CERTIFICATIONS ARE GUARANTEE IF USING THEM WITH OTHER BRAND CONTROL UNITS OR OLD/OBSOLETE DATALOGIC AUTOMATION CONTROL UNITS

MANUAL

S300 safety photocell

S300 safety photocell, eng

DIMENSIONS



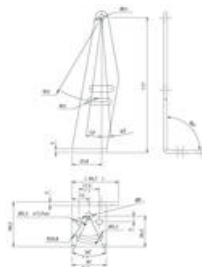
ORDER NUMBERS & ACCESSORIES

| Order no. | Description | Range (m) |
|---------------------------|---|-----------|
| S300-PR-5-G00-EX-SG-ST2 | Safety photocell S300, Transmitter, 10/30 VDC, Type 2 | 0 - 50 |
| S300-PR-5-F01-OC-SG-ST2 | Safety photocell S300, Receiver, 10/30 VDC, Type 2 | 0 - 50 |
| S300-PR-5-G00-EX-M-SG-ST2 | Safety photocell S300 defogging (heated lenses), Transmitter, 10/30 VDC, Type 2 | 0 - 50 |
| S300-PR-5-F01-OC-M-SG-ST2 | Safety photocell S300 defogging (heated lenses), Receiver, 10/30 VDC, Type 2 | 0 - 50 |
| S300-PR-5-G00-EX-SG-ST4 | Safety photocell S300, Transmitter, 10/30 VDC, Type 4 | 0 - 40 |
| S300-PR-5-F01-OC-SG-ST4 | Safety photocell S300, Receiver, 10/30 VDC, Type 4 | 0 - 40 |
| S300-PR-5-G00-EX-M-SG-ST4 | Safety photocell S300 defogging (heated lenses), Transmitter, 10/30 VDC, Type 4 | 0 - 40 |
| S300-PR-5-F01-OC-M-SG-ST4 | Safety photocell S300 defogging (heated lenses), Receiver, 10/30 VDC, Type 4 | 0 - 40 |

THE SAFETY PHOTOCELLS LISTED ABOVE ARE CERTIFIED AND MUST BE USED ONLY WITH SAFETY CONTROL UNITS SG-BWS-T4 AND SG-BWS-T4-MT SERIES. NEITHER TECHNICAL AND FUNCTIONING COMPATIBILITY NOR CERTIFICATIONS ARE GUARANTEE IF USING THEM WITH OTHER BRAND CONTROL UNITS OR OLD/OBSOLETE DATALOGIC AUTOMATION CONTROL UNITS

Accessories

S300 safety photocells do not include brackets, see below for bracket options



Mounting bracket ST-5100

SG-BWS-T4-MT Control unit with double muting, 24 VDC, 2 NO (safety relay output)